

Gravity Soft Serve Freezer

Model 33S

Gravity soft serve freezer. Built to the same quality and high standards of our larger Electro Freeze pressurized models. Occupies a minimum of floor space yet high in production capacity. Ideal for meeting the space, product quality and capacity needs of convenience stores, deli's, snack bars, concession stands, restaurants, yogurt shops and similar businesses.

Special Features

Construction

Sturdy angle iron frame, stainless steel mix hopper, beater and freezing cylinder.

Paneling

Top, front and sides are stainless steel.

Dispensing Head

The finest in insulating materials...no frost or sweating. Easy pull-down handle.

Beater Blades

Plastic, durable & long wearing.

Mix Level Indicator

Flashing light automatically tells operator when mix is needed.

14-Quart Mix Hopper

Specially designed to maintain optimum overrun.

Freezing Cylinder

3 quarts, honed and highly polished stainless steel - foam insulated.

Refrigeration

2 h.p. compressor - permits fast freeze down, quick recovery and high volume capacity.

Mix Feed

Specially designed to maintain optimum overrun.

Night Switch

Provides controlled refrigeration of product during night or any non-business period...reduced energy consumption...reduces product deterioration.

Optional

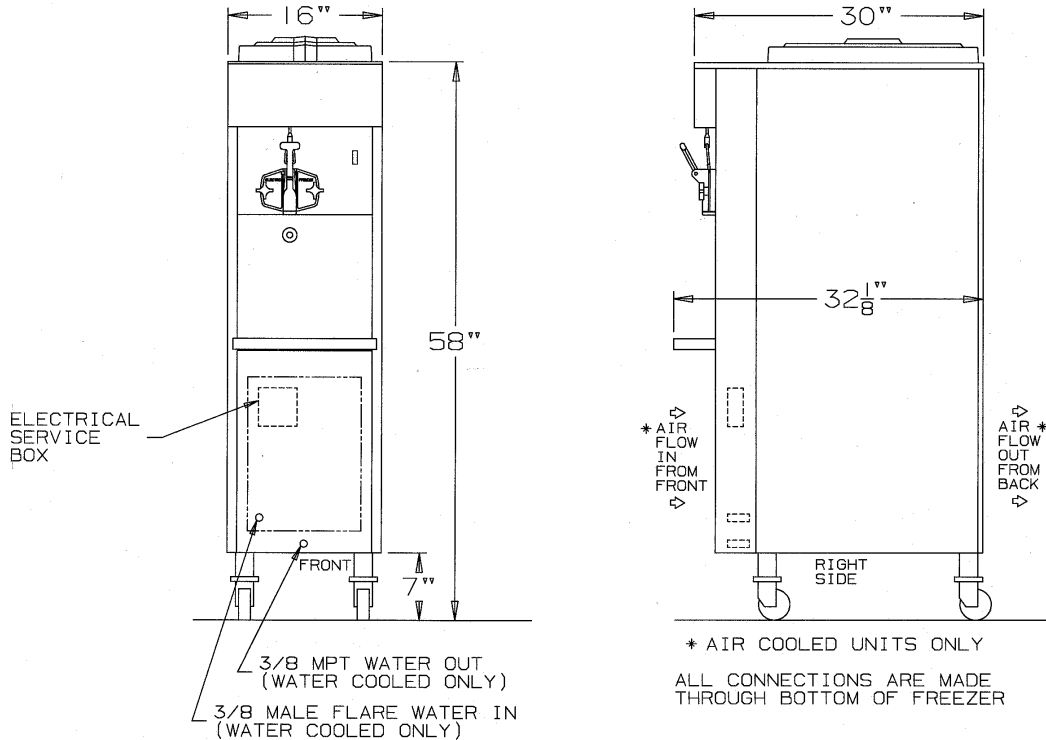
Casters in place of legs.



Model 33S

ELECTRO FREEZE®

Plumbing & Electrical Connections



Model 33S

SPECIFICATIONS

All specifications subject to change without notice.

MODEL NO.	MOTOR H.P.		DIMENSIONS			NET WT.	TOTAL AMPS			
	Beater	Compressor	D.	W.	H.		1 Phase Water	1 Phase Air	3 Phase Water	3 Phase Air
33S	1.5 HP	2 HP 9500 BTU	30"	16"	58"	485 LB. 220 KG	18.4	19.8	11.1	12.5
							MINIMUM CIRCUIT AMPACITY			
							20.0	22.5	13.0	14.0

Self contained air or water cooled.

Refrigerant: 404a

MIX HOPPER CAPACITY: 14 quarts

WIRING - 208/230 Volt A.C. Single Phase, 60HZ, 2 wire

WIRING - 208/230 Volt A.C. Three Phase, 60HZ, 3 wire

Electrical characteristics other than above available on request.

Authorized Distributor

division of H.C. DUKE & SON, INC.

2116 - 8th Avenue • East Moline, Illinois 61244

Phone (309) 755-4553 • (800)755-4545

Fax (309) 755-9858

E-mail: sales@electrofreeze.com • www.electrofreeze.com

Certified and/or listed by:



*Listed by Underwriters Laboratories under Canadian National Standard C22.2 No. 120-M91